

Spartan II

DC SPEED CONTROL

1/8 through 2 hp



The Polyspede Spartan II is a versatile, high performance, industrial grade, SCR DC motor speed control. It is protected by a compact, easy-mounting enclosure. Speed regulation to $\pm 1\%$ of base speed, by IR adjustment, is standard. Closer regulation can be obtained by field-connecting a tachometer. External speed and torque programming can also be added.

Switch-operated control options, pre-wired to input/output terminal strips and mounted in option modules, provide additional motion control capability.

Spartan II is also available in an open-chassis version for sub-panel mounting in enclosures with other equipment. With the open chassis, Spartan II can deliver as much as 3 horsepower with a low form factor PMDC motor.

Spartan II is a part of Polyspede's overall product line, which includes fractional through 400 hp DC SCR drives in single-quadrant and four-quadrant regenerative designs.

POLYSPEDE

Spartan II

Standard Features

- 50/60 Hz, single phase input power. Choice of 115 VAC $\pm 10\%$ or 230 VAC $\pm 10\%$.
- 100 : 1 speed control range.
- Speed regulation to $\pm 1\%$ of base speed.
- Current limiting adjustable to 150% of full load torque.
- Field re-connectable for tachometer feedback.
- Transient voltage protection.
- Sub-cycle fusing for short circuit and semi-conductor protection.
- Maximum speed adjust.
- Temperature-stable speed setting.
- Overload protection (by torque limit).
- Full-wave rectified power for efficient, smooth operation.
- Minimum speed adjust.
- IR compensation adjust.
- Controlled acceleration, adjustable from 0.5 to 15 seconds.
- Comprehensive Basic Manual included.
- Speed dial with linear characteristic.
- Provision for external control signal input.
- Industrial rated.

Option Modules

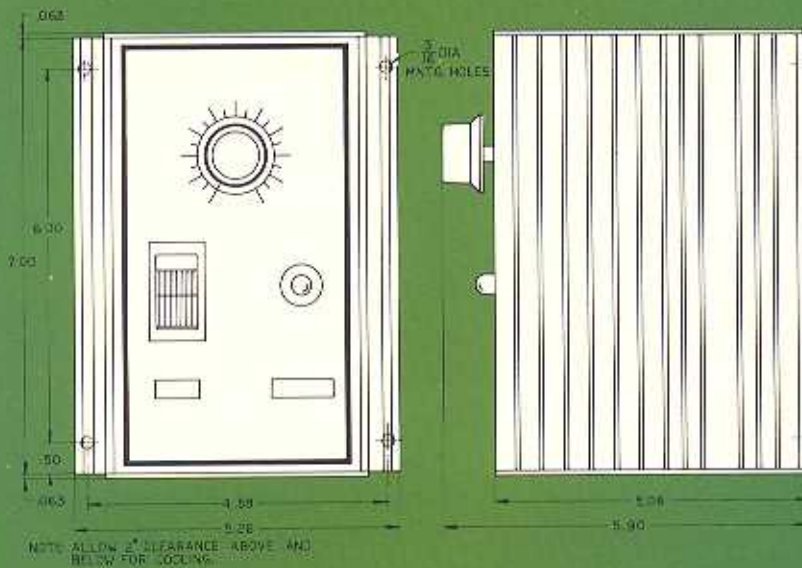
- Run-jog.
- Forward-brake-reverse.
- Run-brake.
- Forward-brake-reverse with run-jog.
- Run-brake with run-jog.

POLYSPEDE

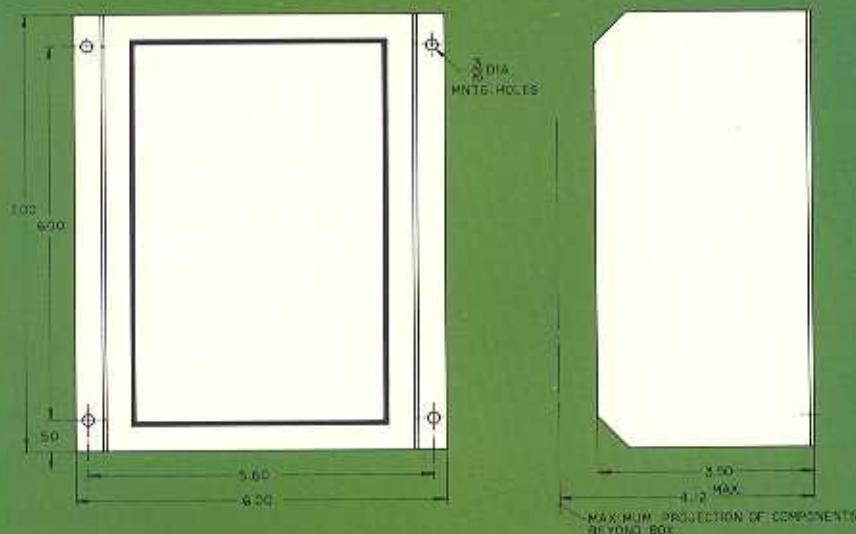
Polyspede Electronics Corporation
6770 Twin Hills Avenue • Dallas, Texas 75231
Telephone 214-363-7245 • Telex 73-0816

Sales Office:
1365 North Glenville Drive • Richardson, Texas 75081
Telephone 214-783-8215 • Telex 73-2599

Basic Enclosure



Option Module



Motor Horsepower	Catalog Number	Electrical Input
1/8	SP-12	115 VAC
1/6	SP-16	115 VAC
1/4	SP-25	115 VAC
1/3	SP-33	115 VAC
1/2	SP-50	115 VAC
3/4	SP-75	115 VAC
1	SP-100	115 VAC
1	SP-101	230 VAC
1 1/2	SP-150	230 VAC
2	SP-200	230 VAC

Input voltage tolerance is $\pm 10\%$